



COLD ROLLED STEEL STRIPS

SG SUGAVI®
An ISO 9001:2015 Certified

ABOUT ANAND ROLLER COMPANY:

ANAND ROLLER COMPANY is one of the leading suppliers of medium and high-carbon cold rolled steel strips.

We are committed to supply high quality strips to our customers and provide top service, being an ISO 9001 certified company, we have written procedures for all jobs as well as have in house required testing facilities such as Rockwell and Vickers hardness testers, Spectrometer, Microscope and muffle furnace and latest regularly calibrated dimensions measuring instrument.

Our team of experts at every level take responsibility to come up with the best possible solutions. Their effective guidance helps the team to understand and work towards the needs of clients.

QUALITY POLICY



All the supplies are carefully checked with in house testing facility and full traceability is maintained, all the supplies are certified. There exists a system of proper labeling all materials for size and grades.

We are committed to customer satisfaction through performance excellence. To achieve our vision, we must continuously improve the quality of all products and services that we provide to our customers.

We are committed to doing so by using our most important resource (our employees at every level) to understand and continuously improve our processes. The management team is focused on providing the company with the best tools possible to succeed.

PROCESS ROUTE OF COLD ROLLED STEEL STRIP

Cold Rolled steel strips highly engineered steel made from hot rolled steel coils.

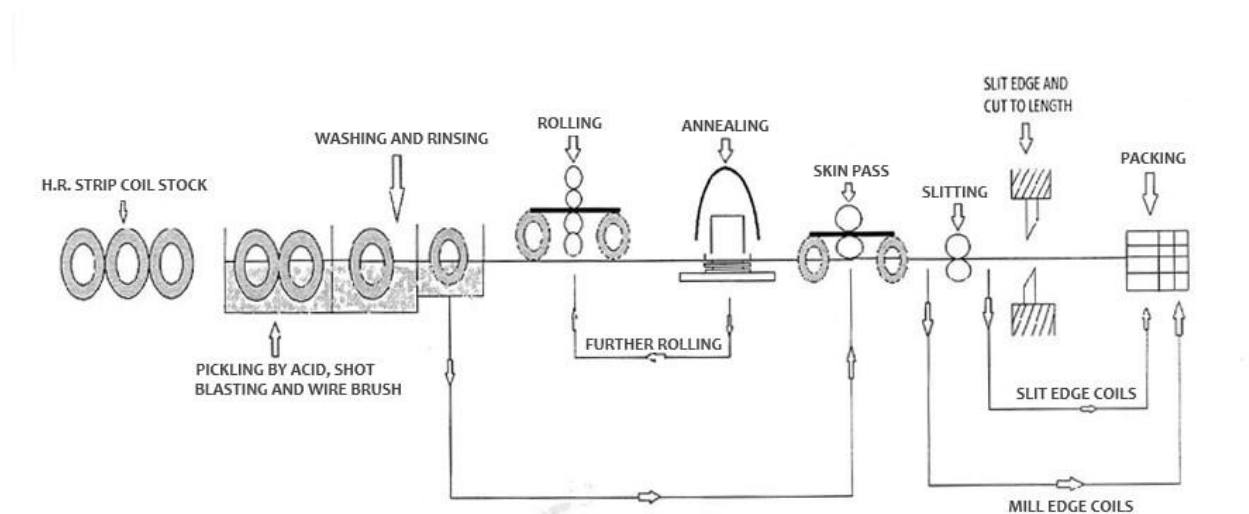
Cold Rolling process changes the mechanical properties of steel allowing to meet forming and bending operations as well as to get good surface finish.

Cold Rolled strip is produced by further processing hot rolled steel strip. Hot rolled steel strip is descaled with combination of chemical and mechanical process and then washed to remove acids.

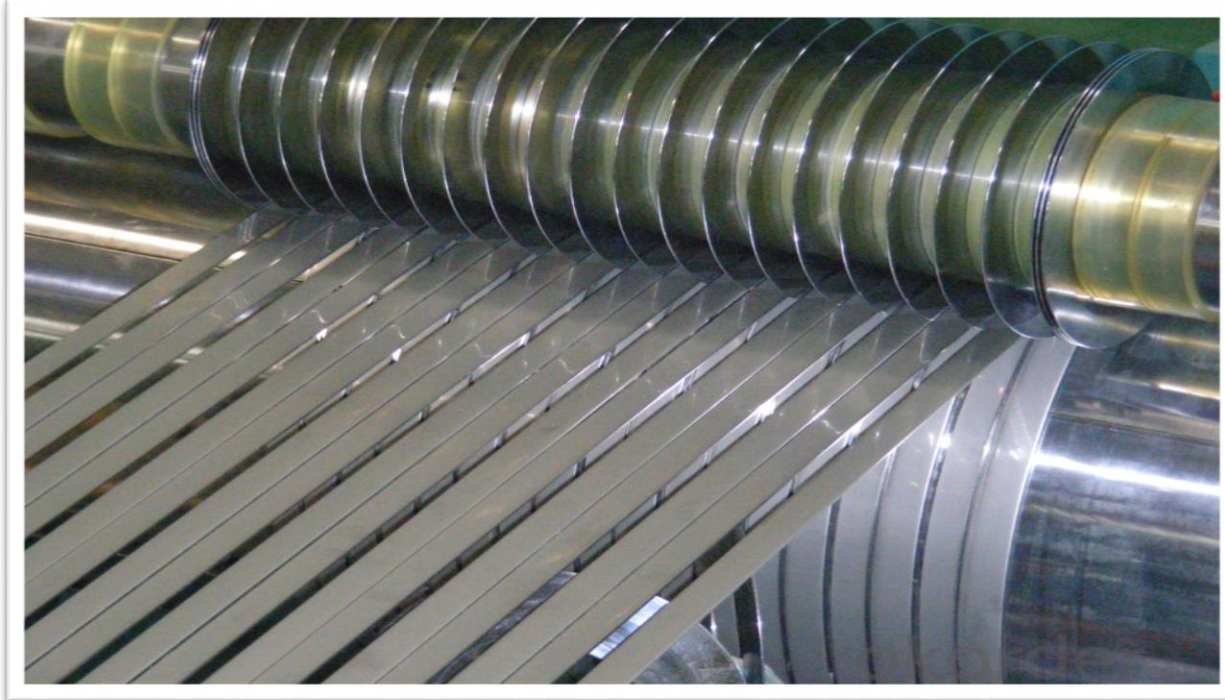
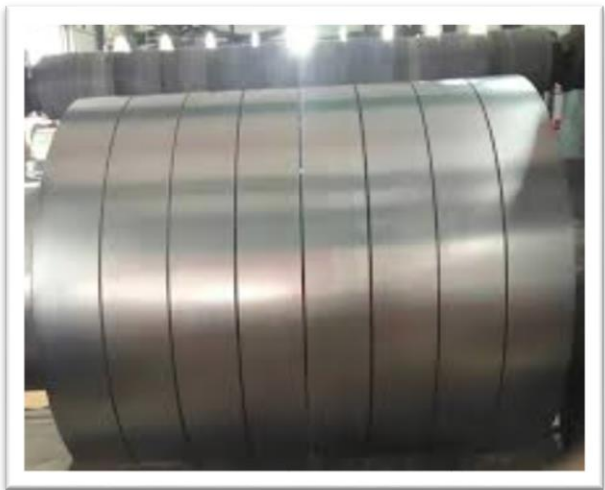
The strip is then further passed through cold rolling mill, this process is called cold rolling because steel is kept below its recrystallization temperature. Strip is rolled to final thickness either directly or with inclusion of annealing process at some intermediate thickness to enable further rolling.

Due to this process one can achieve better thickness tolerance, good surface finish and desired mechanical properties.

FLOW CHART OF COLD ROLLING



PRODUCTS











C-55 GRADE COLD ROLLED ANNEALED STRIPS

This is a Medium Carbon cold rolled steel strip with a very high yield strength. This allows objects made of this steel to return to their original shape despite significant bending or twisting after hardening and tempering. usually in soft annealed condition but can also be supplied in temper rolled hardness in range between 200-300Hv (band range is +/-40 Hv) cold rolled strip. This grade of Steel is popularly known as Annealed Steel Strips, Cold Rolled Steel Strips with medium carbon, Carbon Steel Strip. This grade of steel strip is used where fatigue values and elastic limits are not critical, is used for applications in which high strength, hardness and wear resistance are important. This grade of steel strips has good forming, blanking and bending properties.

C80 ANNEALED STEEL STRIPS

THIS GRADE OF STEEL IS POPULARLY KNOWN AS SPRING STEEL STRIP ANNEALED, SPRING STEEL STRIP UNHARDENED, HIGH CARBON STEEL STRIP, COLD ROLLED STEEL STRIP.

This is a High Carbon cold rolled steel strip, with spheroidized grain structure, this steel is with a very high yield strength. This allows objects made of this steel to return to their original shape despite significant bending or twisting after hardening and tempering.

Usually in soft annealed condition but can also be supplied in temper rolled hardness in range between

200-350 Hv (band range is +/- 40 Hv). This grade of steel is used where fatigue value and elastic limits are critical it is also used where high strength, hardness and wear resistant is needed. This steel has good forming and blanking properties but very poor drawing property.

ANNEALED STEEL STRIPS

C45, C-62, C-75 and EN 47 GRADES

These grade of steel strips are not commonly used in India, so it is not in our inventory but we do supply against a specific request from customer minimum order quantity and lead time for delivery depends on size.

C-45 GRADE

C45 Grade is popularly known as Medium Carbon Steel Strips, Cold Rolled Steel Strips. This grade of strip is used where toughness is required but elasticity is not important Because of lower carbon contents it offers better forming and bending quality.

C62 GRADE

C62 Grade Strips are also known as Medium Carbon Cold Rolled Steel Strips

This grade offers reasonably good fatigue value and elastic limit after hardening and tempering and compares with C65, CK67 grades.

C75 Grade

C75 Grade is known as known as Spring Steel Strip Annealed, Spring Steel Strip Unhardened, High Carbon Steel Strip, Cold Rolled Steel Strip.

GRADES

| Grades | C % | Mn % | Si % (Max) | S % (Max) | P % (Max) | Cr % | V % | Ni % | Mo % |
|--------|-----------|-------------|---------------|--------------|--------------|-----------|-----------|-----------|---------|
| C 45 | 0.42-0.50 | 0.50-0.80 | 0.4 | 0.045 | 0.045 | | | | |
| C 50 | 0.47-0.55 | 0.60-0.90 | 0.4 | 0.045 | 0.045 | | | | |
| C 55 | 0.50-0.60 | 0.60-0.90 | 0.35 | 0.025 | 0.035 | | | | |
| C 65 | 0.60-0.70 | 0.60-0.90 | 0.35 | 0.025 | 0.035 | | | | |
| C 75 | 0.70-0.80 | 0.60-0.90 | 0.35 | 0.025 | 0.035 | | | | |
| C 80 | 0.75-0.85 | 0.60-0.90 | 0.35 | 0.025 | 0.035 | | | | |
| SK85 | 0.80-0.90 | 0.10-0.50 | 0.10-0.35 | 0.03 | 0.03 | max 0.30 | | max 0.25 | |
| SK95 | 0.90-1.00 | 0.10-0.50 | 0.10-0.35 | 0.03 | 0.03 | max 0.30 | | max 0.25 | |
| C 98 | 0.95-1.05 | 0.30-0.60 | 0.10-0.35 | 0.04 | 0.04 | | | | |
| C 120 | 1.10-1.30 | 0.30-0.60 | 0.25 | 0.03 | 0.03 | 0.20-0.50 | | | |
| 50CrV4 | 0.47-0.55 | 0.70-1.10 | 0.40 | 0.035 | 0.035 | 0.90-1.20 | 0.10-0.25 | | |
| 75Cr1 | 0.70-0.80 | 0.60-0.80 | 0.15-0.35 | 0.03 | 0.03 | 0.30-0.40 | | | |
| 75Cr25 | 0.70-0.78 | 0.60-0.80 | Max 0.35 | 0.03 | 0.04 | 0.15-0.27 | | | |
| 75Ni8 | 0.72-0.78 | 0.30 – 0.50 | 0.15 – 0.35 | 0.025 | 0.025 | max 0.15 | | 1.80-2.10 | max 0.1 |

ANAND ROLLER
COMPANY

PLOT NO. 9,10, STREET-6,
SECTOR-3, MODEL
ECONOMIC TOWNSHIP,
DADRI TOE, JHAJJAR,
HARYANA-124103

EMAIL:
sumeetanand87@gmail.com

CONTACT: +91-9671380380,
+91-9811062062,
+91-9999782782